

PRODUCT No. 6601

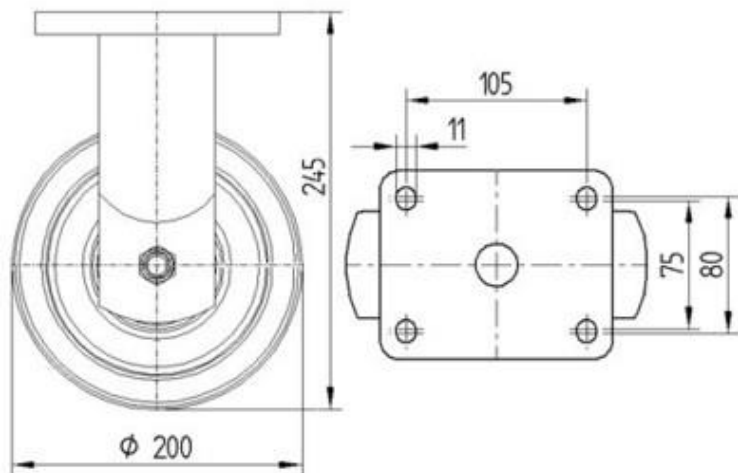
Fixed industrial wheel – 200 mm



(Illustration photograph)

Technical data

Material	Galvanized-steel/PU
Type	Fixed
Bearing	Ball bearing
Weight	7,98 kg
Load capacity (Dynamic/static)	1200 / 2400 kg
Temperature resistance	-20/+60°C
Thread width	50 mm
Wheel diameter	200 mm
Plate holes centres	80/75 x 105 mm
Plate size	135 x 110 mm
Height (total)	245 mm
Plate hole diameter	11 mm



Attributes

- Center of the wheel is made of cast iron and the tread is made of polyurethane.
- Welded fork is zinc-chromated.
- Used especially where there is requirement for extreme load capacity.
- In accordance with EN 12533 regulation – Pulleys and wheels for equipment moving at speeds up to 4km/h and 16km/h.

Product purpose

- Designed as wheel for high load capacity requirements.

Additions

- Offered as – fixed, turnable and turnable with brake types.