

PRODUCT No. 3266

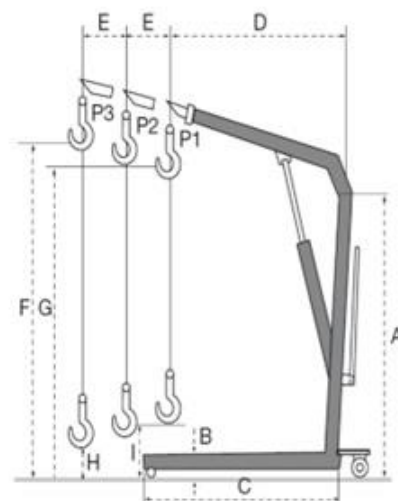
Workshop crane – 1000 kg



(Illustrative photograph)

Technical data

Load capacity (P1/P2/P3)	1000/800/700 kg
Weight	115 kg
A	1597 mm
B	90 mm
C	1749 mm
D	1231 mm
E	150 mm
F	2450 mm
G	2320 mm
H	-
I	280 mm
Width	1100 mm
Wheels (turnable/support/small)	125x30/80x60/70x25 mm



Attributes

- Made of steel material.
- Manual hydraulic crane ease manipulation with heavy burdens.
- Provides higher level of work safety.
- Two adjustable levels of crane arms.
- Equipped with five wheels made of black nylon.
- Crane is foldable – saves space during transportation and storing.

Color variations

- Supplied in red or yellow colour (without option to choose).

Product purpose

- Designed for manipulation with heavy burdens.

