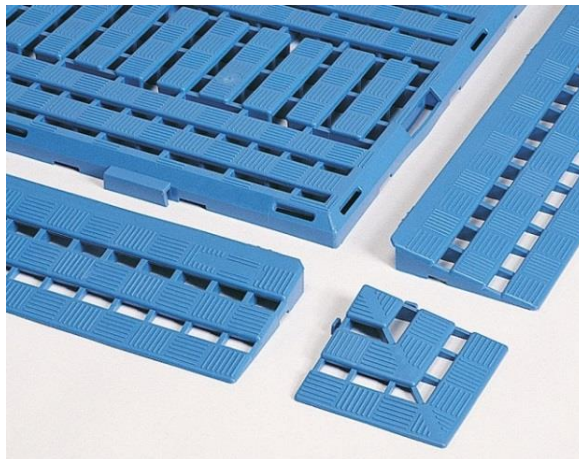


### PRODUCT No. 6481

#### Inroad corner – 120 x 120 mm



(Illustration photograph)

#### Technical data

Material	Polyethylene (LDPE)
Weight	0,05 kg
Load capacity	400 kg / 0,01 m <sup>2</sup>
Color	Blue
Surface finish	Grid design
Operating temperature	-10°C / +60°C
Width	120 mm
Length	120 mm
Height	25 mm

#### Attributes

- Made of low-density polyethylene (LDPE).
- Plastic floor grid for protecting feet and spine of employees.
- Due to its resistances it may be used in wide spectrum of workplaces/areas.
- Grids can be connected freely with additional modules (1200 x 600 x 25 mm).
- Parts are locked by integrated hooks – hooks serve for disconnection (cleaning, relocating, etc.).
- Wedges and corners provide safe crossing and walking.
- Grids are resistant to the most of oils, acids and other chemicals.
- Grids are 100% recyclable.
- Surface finish is made with the grid design.
- Install method – tiles are interlockable.

#### Color variations

- Blue.

#### Product purpose

- Designed as inroad corner for Work deck tile plastic grate.