

PRODUCT No. 157403

Metal bottom-dump waste container (drum + pedal) – 4 m<sup>3</sup>

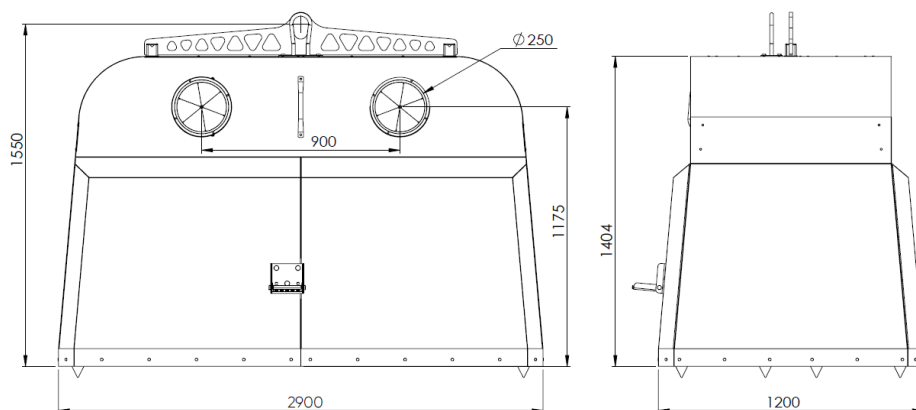


(Illustrative photograph)



### Technical data

Material	steel
Capacity	4 m <sup>3</sup>
Weight (approx.)	372 kg
Width	2900 mm
Depth	1200 mm
Height	1550 mm



### Attributes

- Containers are made of steel sheet by welding and riveting method.
- The use of high-quality sheet steel ensures the container is sturdy and robust.
- The container can be fitted with a two-hook mechanism or with a Kinshofer mechanism.
- The container can be equipped on order with a drum opening, opening with flap, circular or combination of opening and foot pedal mechanism.
- The container can be obtained with colour according to RAL sampler or can be equipped with stickers for waste identification.

### Colour variations

- According to RAL sampler.

### Product purpose

- Designed for collection of municipal and sorted waste.

### Additions

- The container can be modified on customer's request.

### Opening variants (by agreement):

Drum

With flap



Circular

Opening + foot pedal

