

Shelter for six waste bins 240 l – flowerpot roof
TYPE: F5L_8470_00Z6



Illustrational photograph

TECHNICAL DATA

Material	galvanized steel sheet
Sheet thickness (profiles / flowerpot / panels)	1,25 / 0,5 / 0,5 mm
Capacity for waste bins	6x 240 l waste bin
No. of modules	6 pcs
Weight	199 kg
Dimensions (W x D x H)	4170 x 830 x 1320 mm

ATTRIBUTES

- Modern and aesthetic shelter with a durable and solid structure made of galvanized steel sheet.
- The shelter structure is resistant to sudden changes in weather conditions.
- Connecting elements, hinges and locks are protected against corrosion.
- Equipped with a 100 mm deep flowerpot for possibility of planting ornamental plants.
- The flowerpot is equipped with a drain hole with a hose, perforated galvanized steel sheet and a pad.
- The structure is equipped with a front door with cylindric lock for inserting / removing the waste bin.
- Universal installation of the door – variable door opening (right / left).
- A special wire is installed in the inner part for easy waste disposal without removing the bin from the shelter.
- There are openings in the bottom profiles for anchoring to the surface (anchoring material is not included).
- The panel design of the shelter allows air circulation and thus reduces odours.
- Surface finishing is carried out with powder paint.
- Standardly delivered in anthracite colour.

COLOUR VARIATIONS

Anthracite (RAL 7016).

PRODUCT PURPOSE

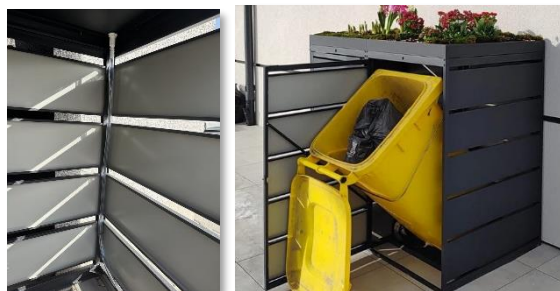
Product is designed as a shelter for placing of waste bin.

ADDITIONS

Other colours on request.

Versions for 120 l or 240 l waste bin are available.

Delivered without anchoring material and waste bins.



RECOMMENDATIONS BEFORE INSTALLATION

Before assembling and installing the product, carefully read the assembly instructions to familiarize yourself with the product.

It is recommended to prepare a suitable base on which the shelter will be installed before installing it. It is necessary to prepare a concrete base or a base with paving stones, however, the base must be flat. It is also recommended that the base is at least 10 cm larger than the area of the shelter structure. After assembling the structure, anchor it to the base with purchased 8-10 cm anchors (not included). One module is equipped with 4 pre-prepared anchor openings + 2 additional openings in the frame if necessary.