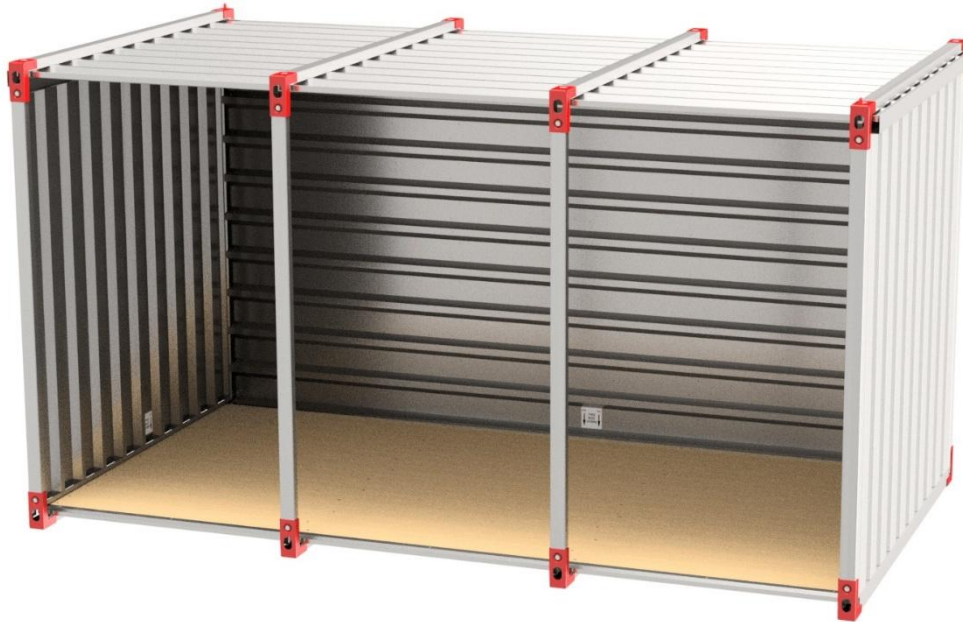


Universal shelter – 4 m long
TYPE: F5L_4879_0000



Illustrational photograph

TECHNICAL DATA

Material	steel sheet/galvanized/wood
Thickness (container/profiles/bottom)	0,75/2/35 mm
Max. weight load (crane/fork-lift)	1500 kg
Area load (bottom)	500 kg/m ²
Weight	462 kg
Width (outer/inner/folded)	4000/3840/4000 mm
Depth (outer/inner/folded)	2180/2020/2180 mm
Height (outer/inner/folded)	2190/2020/380 mm

ATTRIBUTES

- Made of high-quality materials – steel and wood.
- Construction is made of galvanized steel sheet – 2 mm thick. Fills are made of trapezoidal sheet 0,75 mm thick.
- Bottom is made of wood planks – 35 mm thick.
- Assembled shelter can be transported by a crane or a fork-lift machinery.
- Suitable for placement in gardens areas, near workshops – for waste management.

PRODUCT PURPOSE

Product is designed as shelter which is suitable for placement in gardens, near workshops or for waste management.

ADDITIONS

Supplied in disassembled state.